

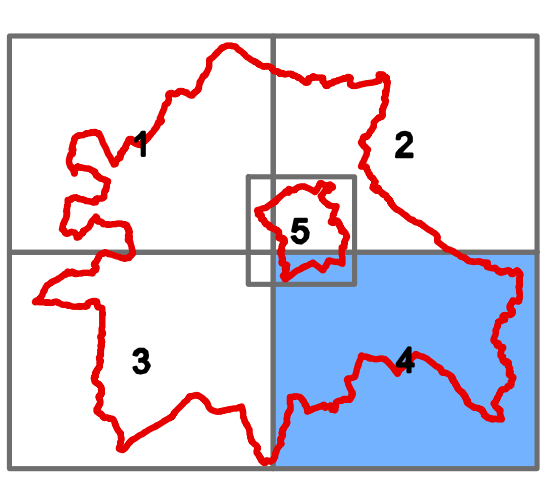

**KEY**

- South Cambridgeshire DC & Cambridge City Council Boundaries
- EA Main River
- Ordinary Watercourses
- Old West Internal Drainage Board
- Swaffam Internal Drainage Board
- Waterbeach Level Internal Drainage Board
- Beds and Ivel Internal Drainage Board
- Swavesey Internal Drainage Board
- Willingham and Over Internal Drainage Board

**SCDC IDB areas**

- Bedfordshire & River Ivel IDB
- Old West IDB
- Swaffam IDB
- Swavesey IDB
- Waterbeach IDB
- Willingham & Over IDB

Reproduced from Ordnance Survey data by permission of the Controller of Her Majesty's Stationary Office. © Crown copyright (2008). All rights reserved. License No. 0100022500. © 2008 NAVTEC

**TITLE:**  
SOUTH CAMBRIDGESHIRE DC  
AND CAMBRIDGE CITY COUNCIL  
LEVEL 1 SFRA

**FIGURE No:**  
EXISTING WATERCOURSES  
1402 - B - 1.4